

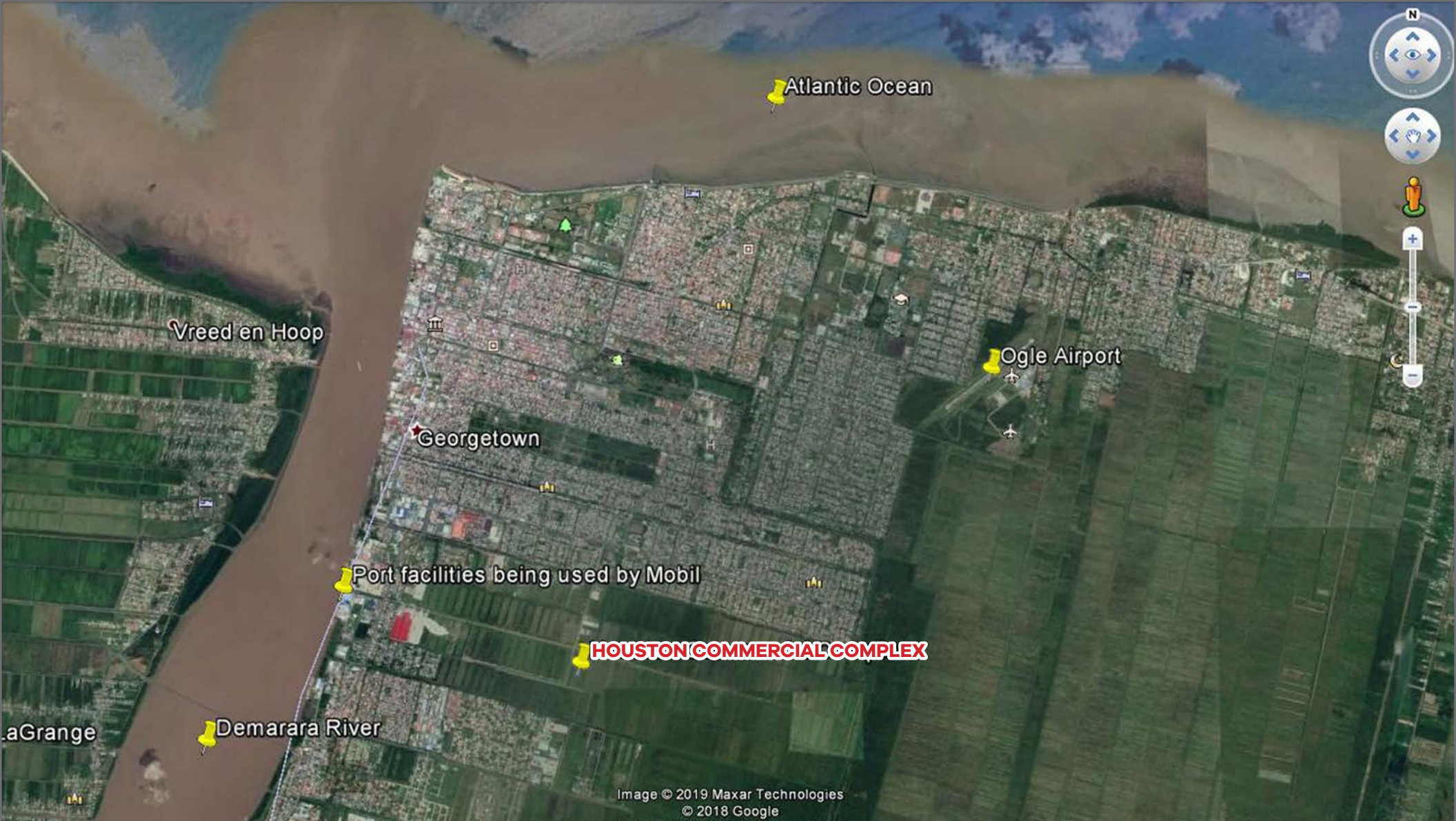


HOUSTON

Commercial Complex

LOCATION: NORTH ROME 2, HOUSTON, EAST BANK DEMERARA





Location map



Site Over View



Overview



Front Elevation



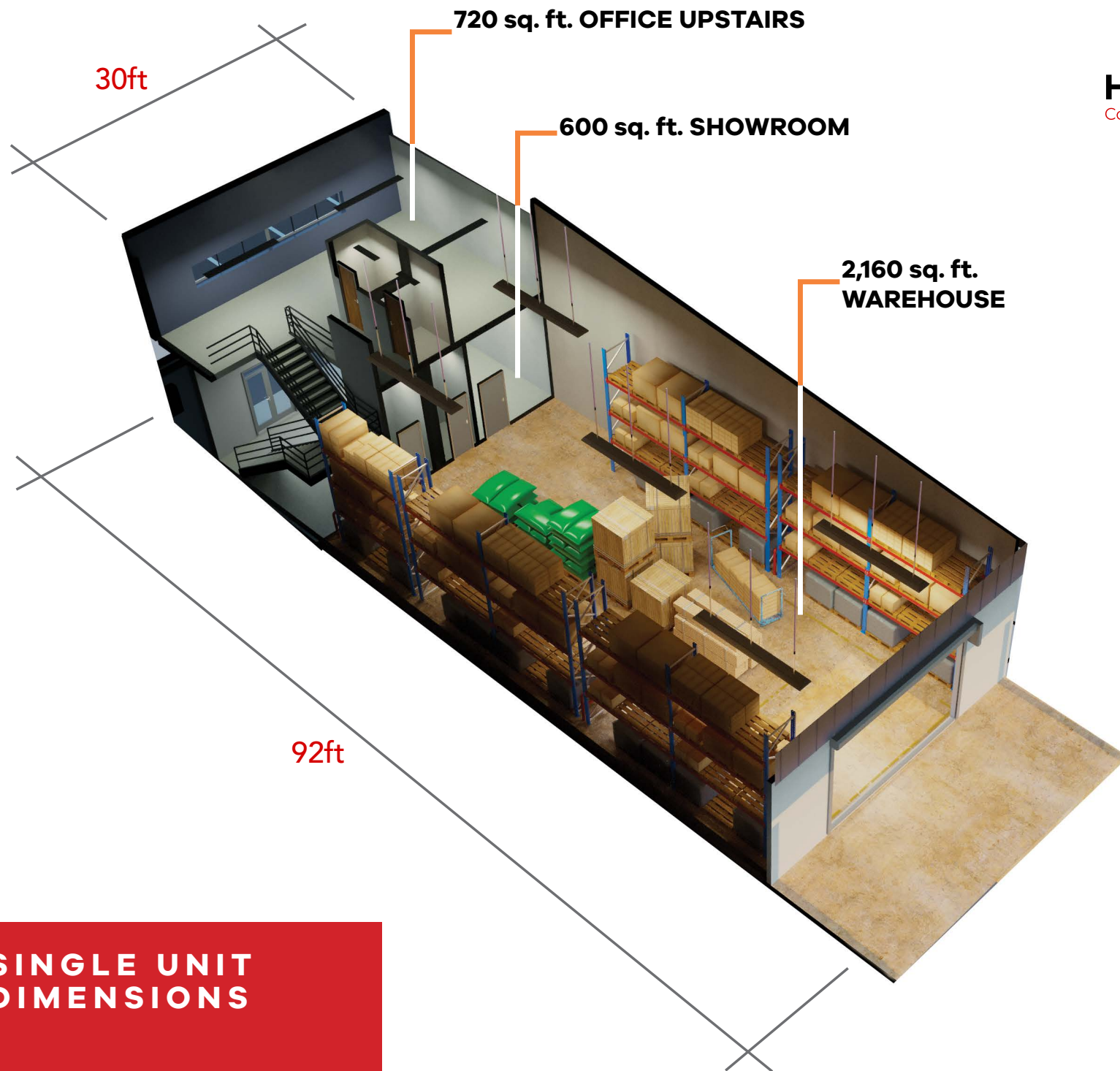
Warehouse Access Area



Easy Access to Storage

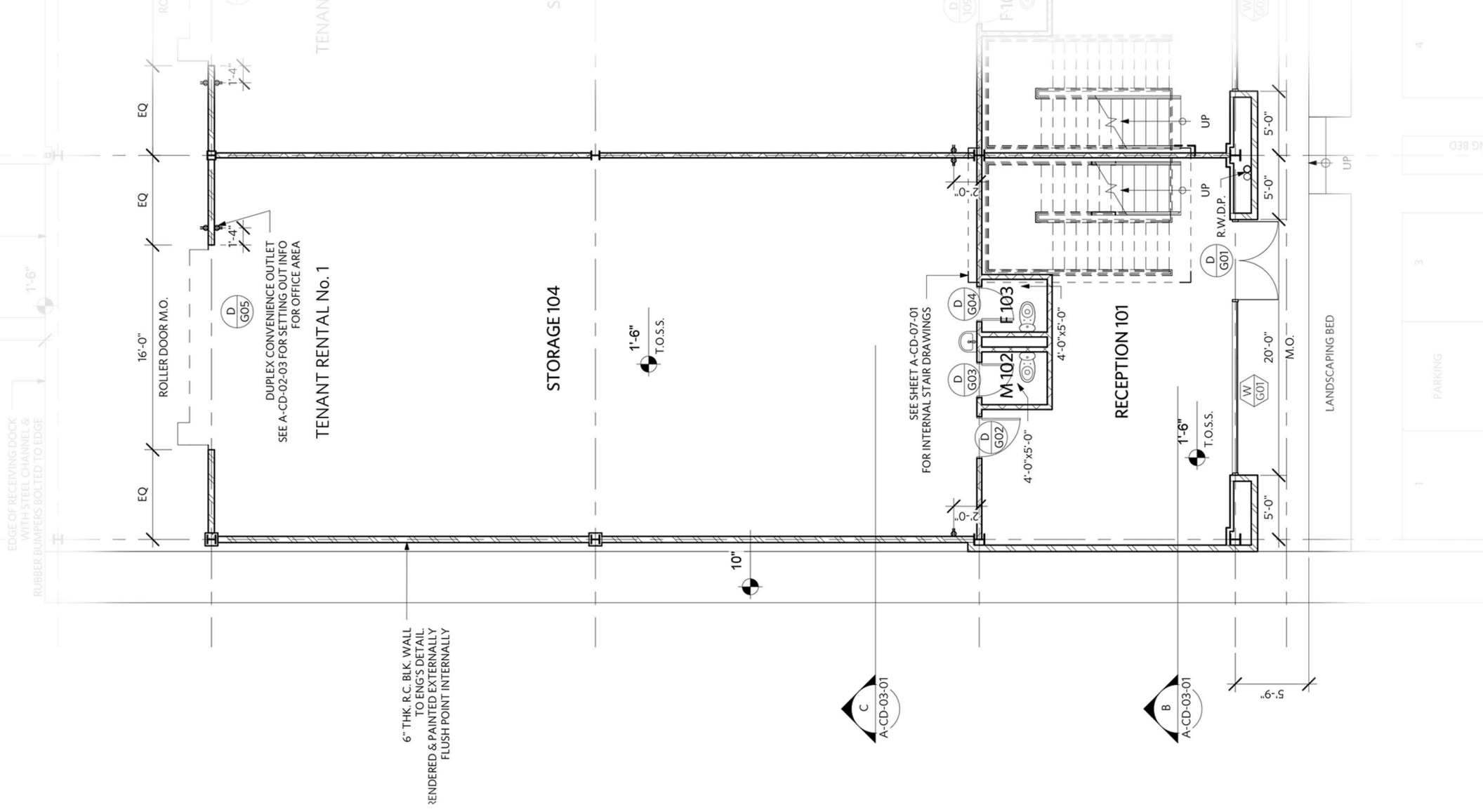


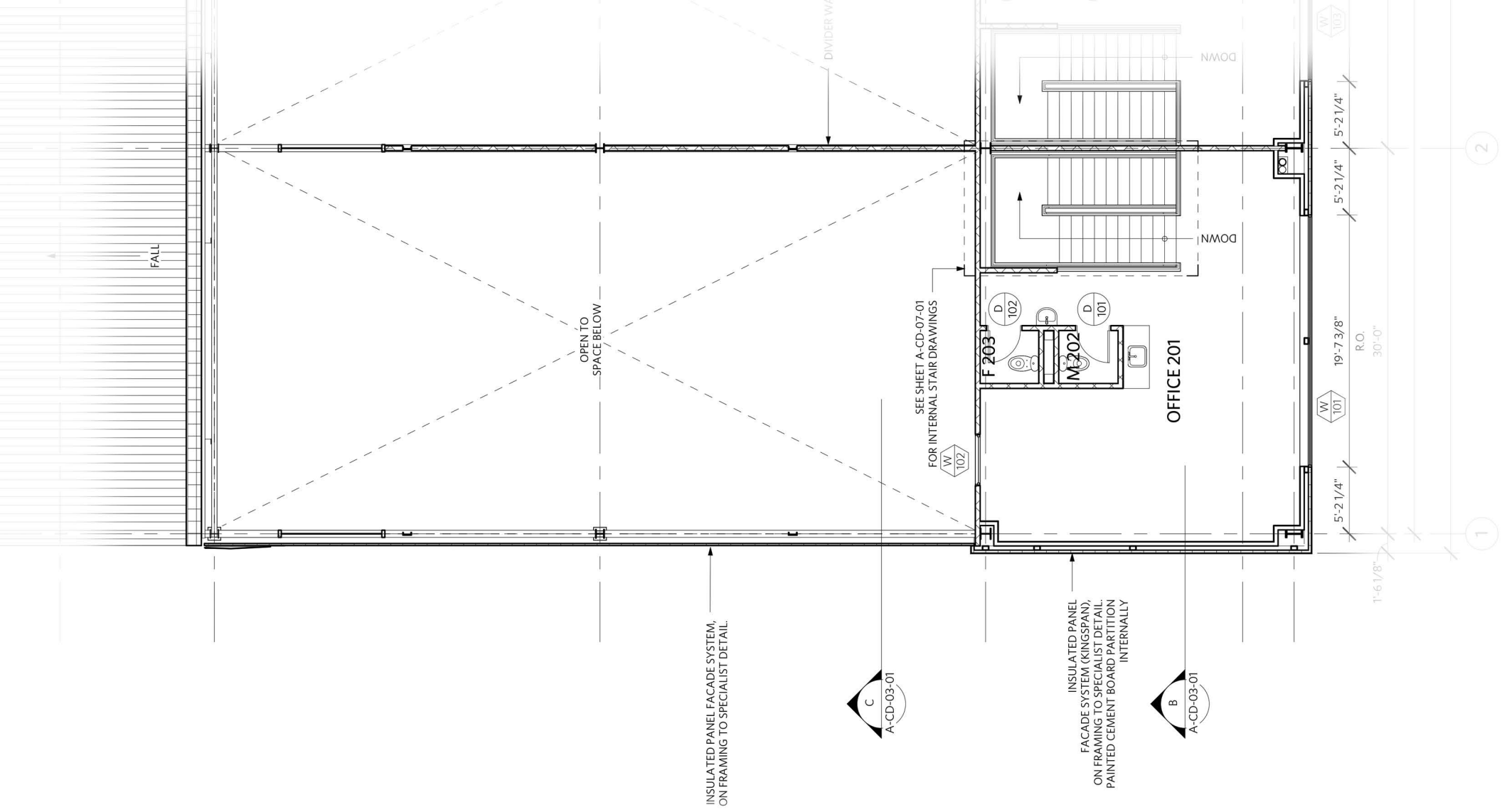
Generous and Secure Parking



**SINGLE UNIT
DIMENSIONS**

Ground floor plan





First floor plan

Project Details

Located in Houston, with easy access to many of the main Demerara ports and to Georgetown. The overall site is 17.2 acres in size. Initially 12 warehouses / offices will be constructed at the Southern end of the site. In the future the Northern area of the site would be available for additional warehousing, retail or other commercial buildings.



Features

- 24 hour security
- Container offloading ramp
- AC ready
- Washrooms on ground and upper floors
- Generator on site
- Water storage
- Landscaped and external lighting
- Generous internal parking





HOUSTON

Commercial Complex

CONTACT US:

Tel:

Trinidad: 1 (868) 623-4871

Guyana: 011 (592) 601-0941

Email: bckeeping@agostinisltd.com